



# Jagenberg Converting Solutions

Introduction

# Agenda.

---

**01** Introduction of Jagenberg Group

---

**02** Introduction of Jagenberg Converting Solutions

---

# 01 Jagenberg Group



# Key facts.

2022: ~330

Turnover in Mio. €

Locations in Europe,  
China, India and the  
USA

Locations

2022: ~1.300

Employees

Klenewefers GmbH  
85 %

Jagenberg AG  
83 %

Equity ratio

100 %

Private ownership

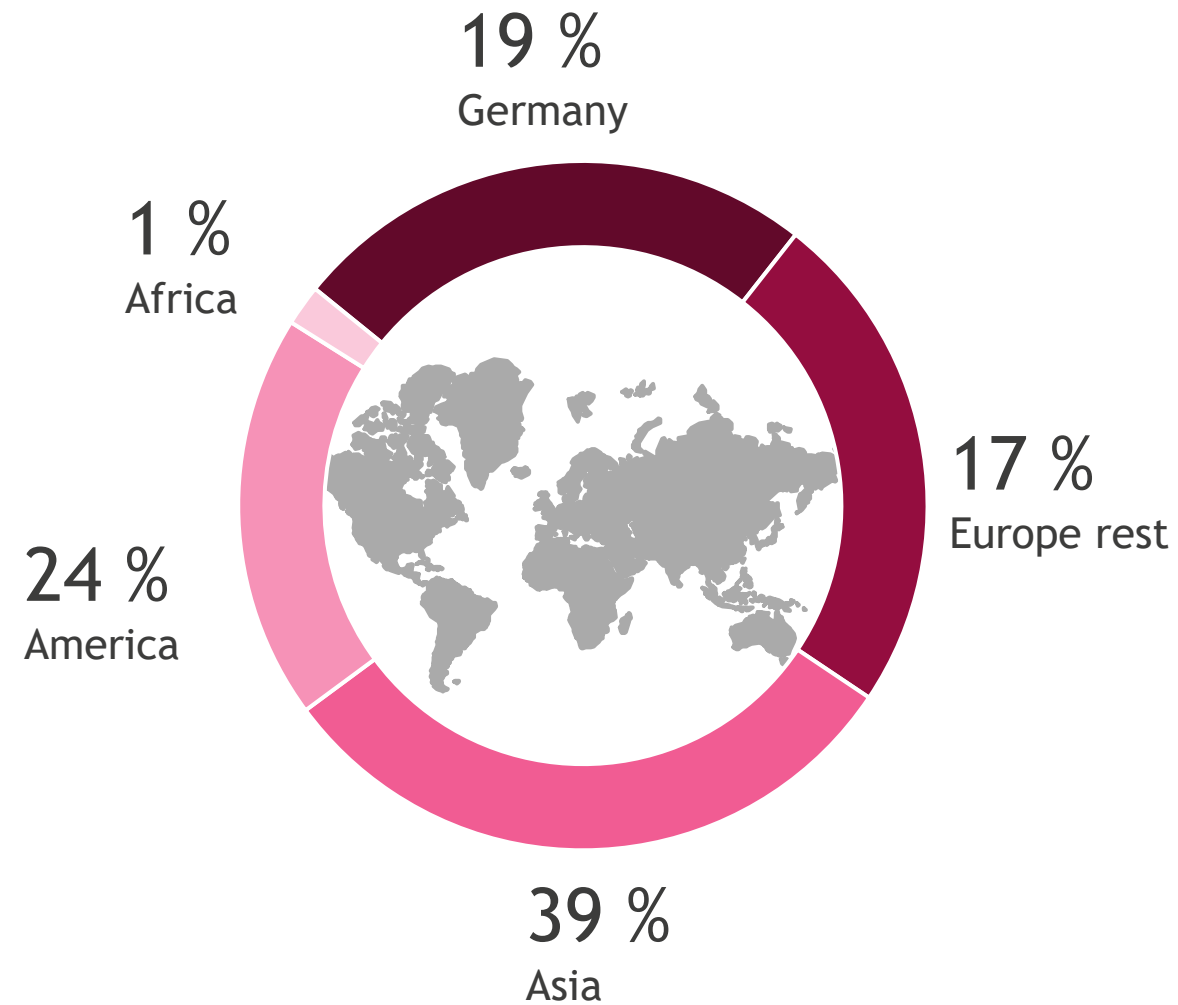
7

Business parks



**Executive Board**  
Dr. Christian Jostes  
Dr. Stephan Witt

# Sales by region.



Fiscal year 2022

# Klenewefers Group



## INDUSTRIAL SOLUTIONS

## OTHERS

### MACHINERY & PLANTS

### AUTOMATION & DRIVES

### DIGITAL





**KLEINEWEFERS**

## REAL ESTATE



and others ...

# Kleinewefers/Jagenberg Group

<div> <div>  <div>KLEINWEFERS</div> </div> <div> <div>Kleinewefers GmbH</div> <div>Jan Kleinewefers/Dr. Christian Jostes</div> </div> </div>					
<div> <div>  <div>jagenberg</div> <div>Group</div> </div> <div> <div>Jagenberg AG</div> <div>Dr. Christian Jostes/Dr. Stephan Witt</div> </div> </div>					
INDUSTRIAL SOLUTIONS			OTHERS	REAL ESTATE	
Kampf GmbH, Germany	Atlas Converting Equipment Ltd., Great Britain	Lebbing automation & drives GmbH, Germany	Survival Armor Inc., USA	K2 Tower + Industriepark Krefeld, Germany	MONFORTS QUARTIER Mönchengladbach, Germany
Kampf LSF GmbH & Co. KG, Germany	Atlas Converting (North America) Inc., USA	Lebbing automation & drives US Corp., USA		LOG   WERK Krefeld, Germany	Glockenspitz Krefeld, Germany
Kampf Machinery Corp., Windsor, USA	ACE (Shanghai) Trading Co. Ltd., China			Neuer Weg Krefeld, Germany	Verarbeitungs- u. Logistikzentrum Oedt, Germany
Kampf Machinery (Shanghai) Co. Ltd., China	Zima Corporation USA			Industriestraße Krefeld, Germany	Weberei Herongen, Germany
Kampf Technology (Changzhou) Co. Ltd., China	Kusters Calico Machinery Private Ltd., India			and others ...	
Kampf (Hong Kong) Ltd., China	Jagenberg Textile GmbH & Co. KG, Germany				
Kampf Machinery India Pvt. Ltd., India	Jagenberg Paper GmbH, Germany				
Maschinen Ritter Wickeltechnik GmbH, Germany	WDB Systemtechnik GmbH, Germany				
Jagenberg Converting Solutions GmbH Germany					
Jagenberg Digital Solutions GmbH Germany					

MACHINERY & PLANTS

AUTOMATION & DRIVES

DIGITAL

# Our mission statement. Create.Future.Together.



## Create.

Innovative technologies for processing web-shaped materials are the historically grown core of the Jagenberg Group and have been our focus for over 140 years. We design creative and future-oriented solutions for our customers. Our thinking is entrepreneurial and our culture mid-sized. Short decision-making processes, a high level of action competence and an agile organization enable us to take successful steps into the future quickly and decisively.



## Future.

We are ready to face the dynamic changes that the future holds for all of us - be it technological progress, digitization or climate change. Based on our values, we as a Group are actively working on innovative solutions to harness these megatrends in an economically and ecologically sustainable way for our customers and ourselves.



## Together.

Together we are strong! This motto characterizes the cohesion in our group. We face the future as a strong team of doers and creative minds. Together with our customers, suppliers and partners, we create the future. Through a fair and trusting exchange, we learn from each other and build long-term and reliable partnerships together.



# Our values. What we care about.

Trust.

Integrity.

Reliability.

Fairness.

Respect.

Openness.

Honesty.



# Our fields of application.



Coating/  
Laminating



Lacquering/  
Embossing



Drying



Printing



Calendering



Slitting/Winding/  
Spooling



Handling



Dyeing/Bleaching/  
Mercerising



Automation  
& Drives



Machine safety/  
CE-conformity



Digitization

CARING FOR  
**THE FUTURE.**





# Sustainability Strategy. Caring for the Future.

Our sustainability strategy systematically signifies our commitment to take responsibility and minimize negative environmental impacts.

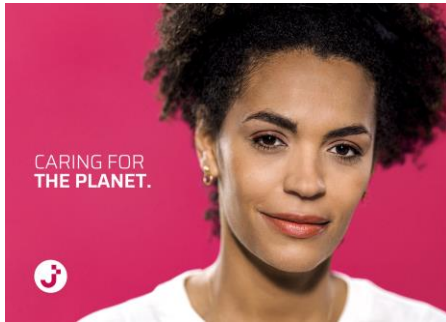
We respond to challenges by making the most of our strengths and skills and sharing our knowledge within the Group and with our suppliers and customers. Our comprehensive approach enables us to adopt new perspectives and develop sustainable solutions.



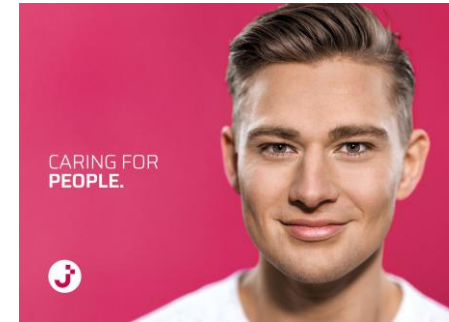
# Sustainability Strategy. Our Sustainability Report.



Climate action



Resource awareness



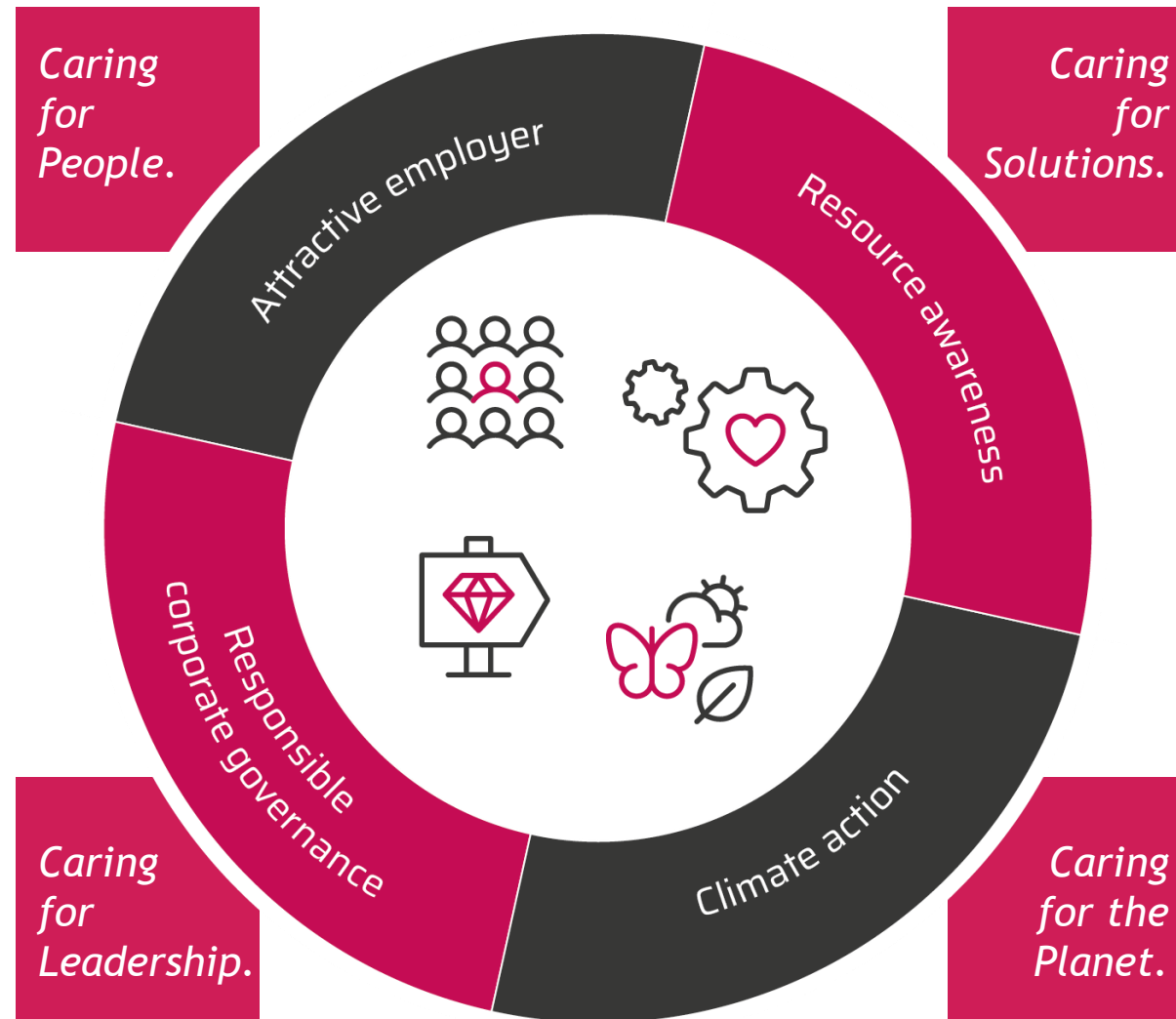
Attractive employer



Corporate governance

# Sustainability Strategie.

## Guiding themes.



# Sustainability Strategy.

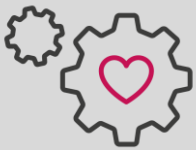
## Our fields of action.

We concentrate on the following action areas:



### ***Climate action***

We support the Paris Agreement and are actively helping to reduce carbon emissions.



### ***Resource awareness***

We establish a responsible approach to the use of resources along the entire value chain.



### ***Attractive employer***

As an employer, we attach great importance to treating our employees responsibly and respectfully. We create attractive conditions to promote personal and professional development.



### ***Responsible corporate governance***

In line with our value system, we act on the basis of irreproachable conduct from an ethical and legal perspective.

## 02 Introduction of Jagenberg Converting Solutions







## Integrate.Converting.Competences.

Your turnkey solution for the production of innovative foils for Surface and Energy applications.



# Jagenberg Converting Solutions GmbH

## Integrate.Converting.Competences.

JCS integrates the competences of Jagenberg Group companies into a single solution from one source.

### Purpose

Bocholt  
Erlangen  
Hamburg  
Krefeld  
Ostwestfalen-Lippe

### Locations

**>30**  
and **>500**  
located within other  
group companies

### Employees



### Management Team

Thomas Lebbing	(Managing Director)
Guido Lebbing	(Managing Director)
Steffen Heckmann	(Managing Director)

# Jagenberg Converting Solutions GmbH

## Integrate. Converting. Competences.

Germany  
Bocholt

Headquater



Germany  
Business Unit Krefeld

Central Services



Germany  
Business Unit Hamburg

Advanced Energy Technologies



Germany  
Business Unit Ostwestfalen Lippe

Advanced Surface Technologies















Germany  
Business Unit Erlangen

Advanced Energy Technologies



# Engineering competence centres.

Coating & Drying	 	BU Hamburg	9 Engineers	<b>Area of expertise.</b> Coating-line engineering Process engineering Coating units Dryers	
Coating & Winding		BU Laußig	10 Engineers	<b>Area of expertise.</b> Coating units Winders Slitting units	
Printing & Lacquering	 	BU Ostwestfalen	7 Engineers	<b>Area of expertise.</b> Machine engineering Process engineering Lacquering units Printing units	
Autom. & Drives		BU Bocholt	45 Engineers	<b>Area of expertise.</b> Automation & Drives Data systems	
Safety		BU Coesfeld	10 Engineers	<b>Area of expertise.</b> CE Marking & Risk assessment Functional safety engineering	

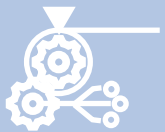


Integrate. Converting. Competences.

Jagenberg Converting Solutions is focused on providing  
**innovative and sustainable solutions**  
for the web-converting industry.

## Our added value.

Advanced  
Solutions.



Increasing  
productivity.



Total cost of  
ownership.



Reduction of  
waste.



Carbon  
footprint.



## Advanced technologies as enabler.

Process engineering

Technology

Automation & Drives

Digitization

Handling systems

Functional safety

Connectivity

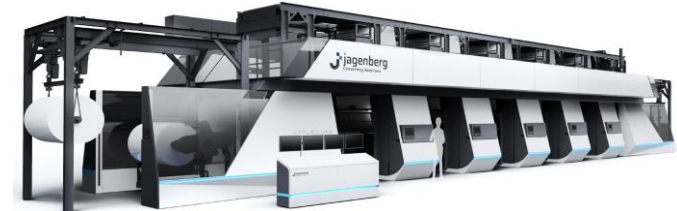


# Business areas of JCS.



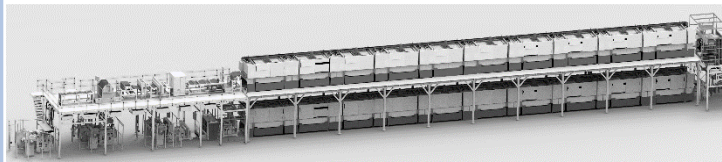
Integrate. Converting. Competences.

**Your general contractor.**  
Integrates all competences for state-of-the-art  
roll to roll production.



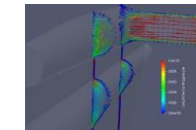
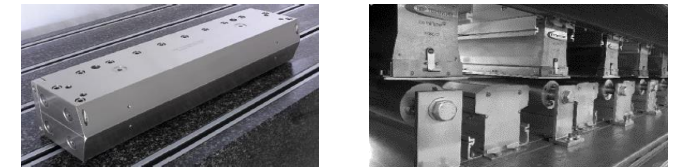
Drawing: Jagenberg Converting Solutions GmbH

**Turnkey equipment for the  
surface industry.**



Rendering: Jagenberg Converting Solutions GmbH

**Turnkey equipment for the  
energy industry.**



**Advanced process technology.**

**wdb**  
Jagenberg Group  
Unique.Surface.Ideas.

**kampf lsf**  
Jagenberg Group  
Converting.Processing.Unlimited.

**kampf**  
Jagenberg Group  
Slitter.Winder.Kampf.

**lebbing**  
Jagenberg Group  
Automation.Drives.Future.

**lebbing**  
Jagenberg Group  
Automation.Drives.Future.  
Lauer CE-Safety

**jagenberg**  
Digital Solutions  
Connect.Develop.Advance.

# Your direct contact.



## YOUR PERSONAL CONTACT

### Energy Applications

Mr. Thomas Lebbing (Managing Director)

Email: [thomas.lebbing@jagenberg-converting.com](mailto:thomas.lebbing@jagenberg-converting.com)

### Surface Applications

Mr. Guido Lebbing (Managing Director)

Email: [guido.lebbing@jagenberg-converting.com](mailto:guido.lebbing@jagenberg-converting.com)

**Jagenberg Converting Solutions GmbH**

Konrad-Zuse-Str. 16  
46397 Bocholt

[info@jagenberg-converting.com](mailto:info@jagenberg-converting.com)