



# Jagenberg Converting Solutions

Company overview

# Agenda.

---

**01** Jagenberg Group

---

**02** Jagenberg Converting Solutions (JCS)

---

**03** JCS Surfaces

---

01  
Jagenberg Group



# Key facts.

2023: ~370

Turnover in Mio. €

Locations in Europe,  
China, India and the  
USA

Locations

2023: ~1.430

Employees

Klenewefers GmbH  
86 %

Jagenberg AG  
82 %

Equity ratio

100 %

Private ownership

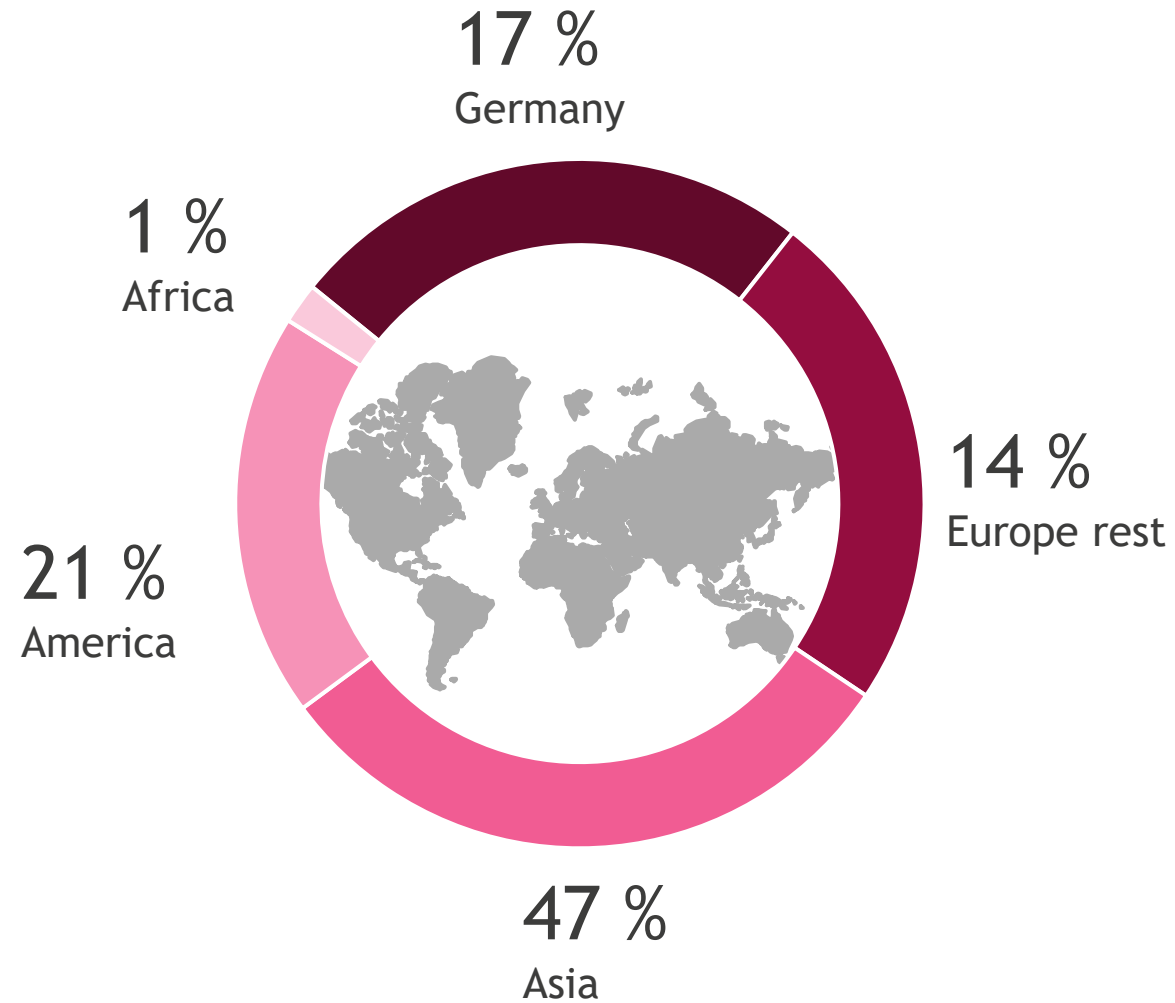
7

Business parks



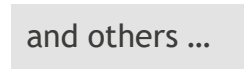
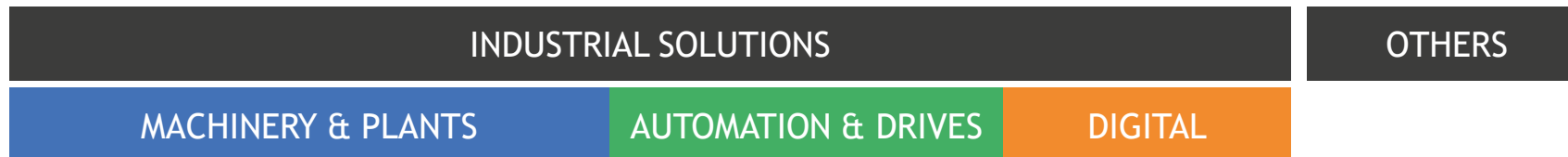
Executive Board  
Dr. Christian Jostes  
Dr. Stephan Witt

# Sales by region.

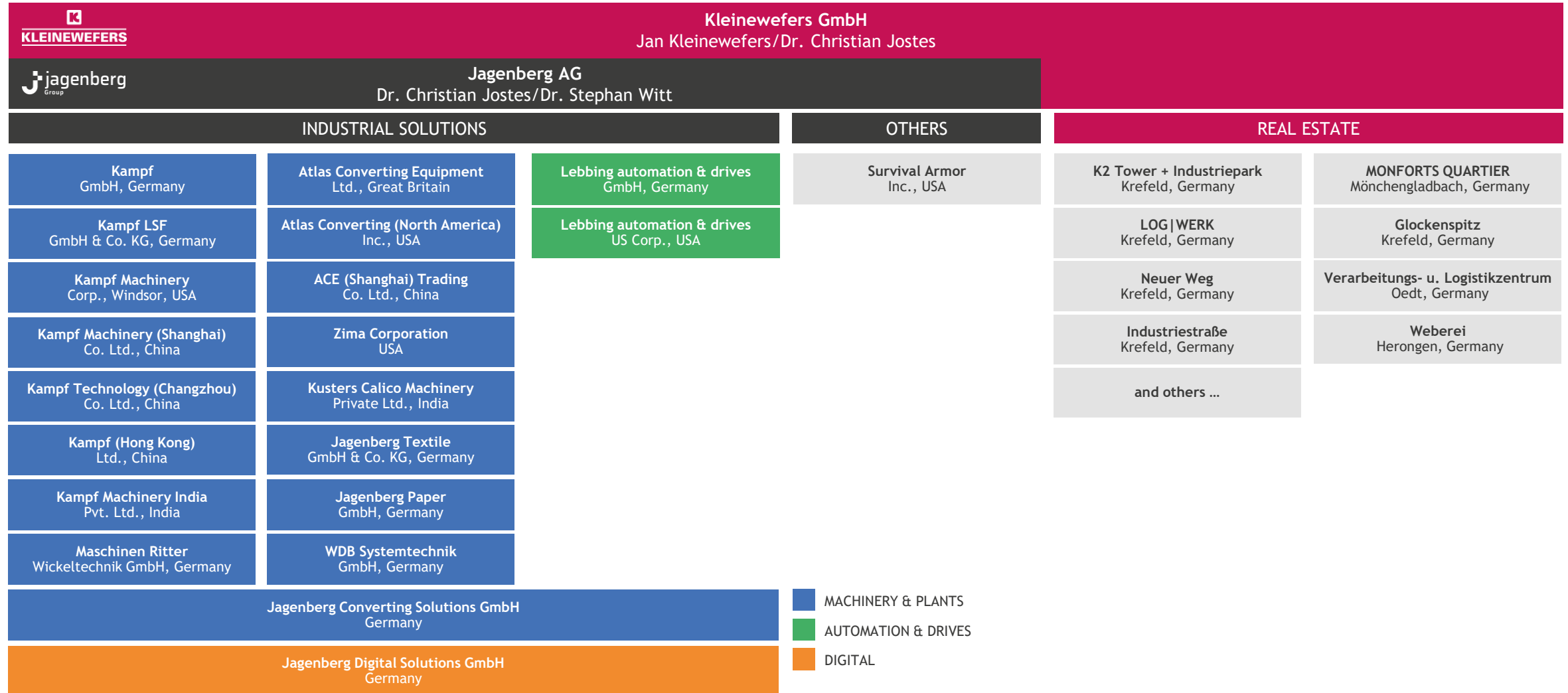


Fiscal year 2023

# Kleinewefers Group



# Kleinewefers/Jagenberg Group



- MACHINERY & PLANTS
- AUTOMATION & DRIVES
- DIGITAL

# Our mission statement. Create.Future.Together.



## Create.

Innovative technologies for processing web-shaped materials are the historically grown core of the Jagenberg Group and have been our focus for over 140 years. We design creative and future-oriented solutions for our customers. Our thinking is entrepreneurial and our culture mid-sized. Short decision-making processes, a high level of action competence and an agile organization enable us to take successful steps into the future quickly and decisively.

## Future.

We are ready to face the dynamic changes that the future holds for all of us - be it technological progress, digitization or climate change. Based on our values, we as a Group are actively working on innovative solutions to harness these megatrends in an economically and ecologically sustainable way for our customers and ourselves.

## Together.

Together we are strong! This motto characterizes the cohesion in our group. We face the future as a strong team of doers and creative minds. Together with our customers, suppliers and partners, we create the future. Through a fair and trusting exchange, we learn from each other and build long-term and reliable partnerships together.



# Our values. What we care about.

Trust.

Integrity.

Reliability.

Fairness.

Respect.

Openness.

Honesty.

# Our fields of application.



Coating/  
Laminating



Lacquering/  
Embossing



Drying



Printing



Calendering



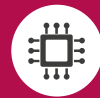
Slitting/Winding/  
Spooling



Handling



Dyeing/Bleaching/  
Mercerising



Automation  
& Drives



Machine safety/  
CE-conformity



Digitization

CARING FOR  
THE FUTURE.



# Sustainability Strategy. Caring for the Future.

Our sustainability strategy systematically signifies our commitment to take responsibility and minimize negative environmental impacts.

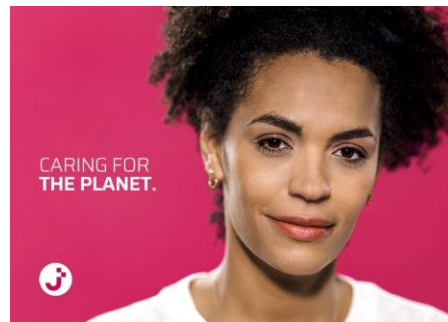
We respond to challenges by making the most of our strengths and skills and sharing our knowledge within the Group and with our suppliers and customers. Our comprehensive approach enables us to adopt new perspectives and develop sustainable solutions.



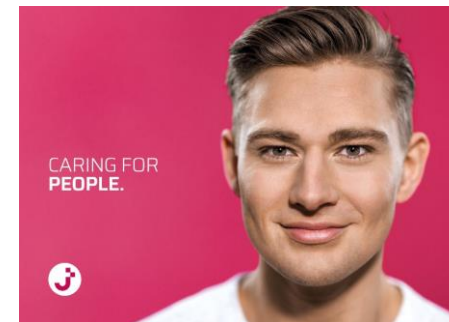
# Sustainability Strategy. Our Sustainability Report.



Climate action



Resource awareness

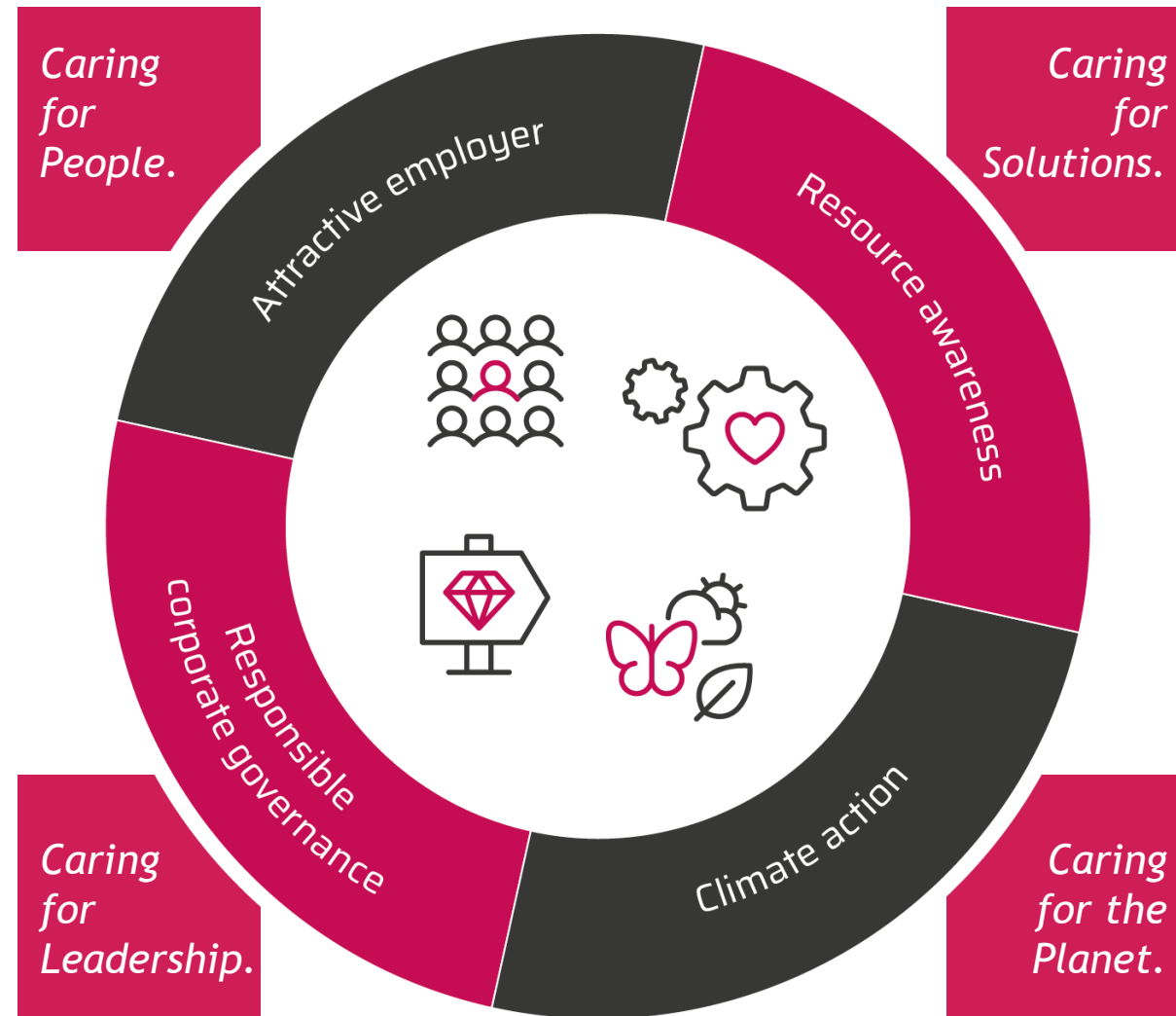


Attractive employer



Corporate governance

# Sustainability Strategie. Guiding themes.



# Sustainability Strategy.

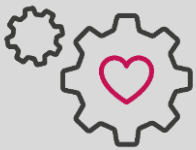
## Our fields of action.

We concentrate on the following action areas:



### *Climate action*

We support the Paris Agreement and are actively helping to reduce carbon emissions.



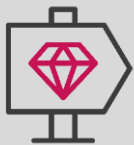
### *Resource awareness*

We establish a responsible approach to the use of resources along the entire value chain.



### *Attractive employer*

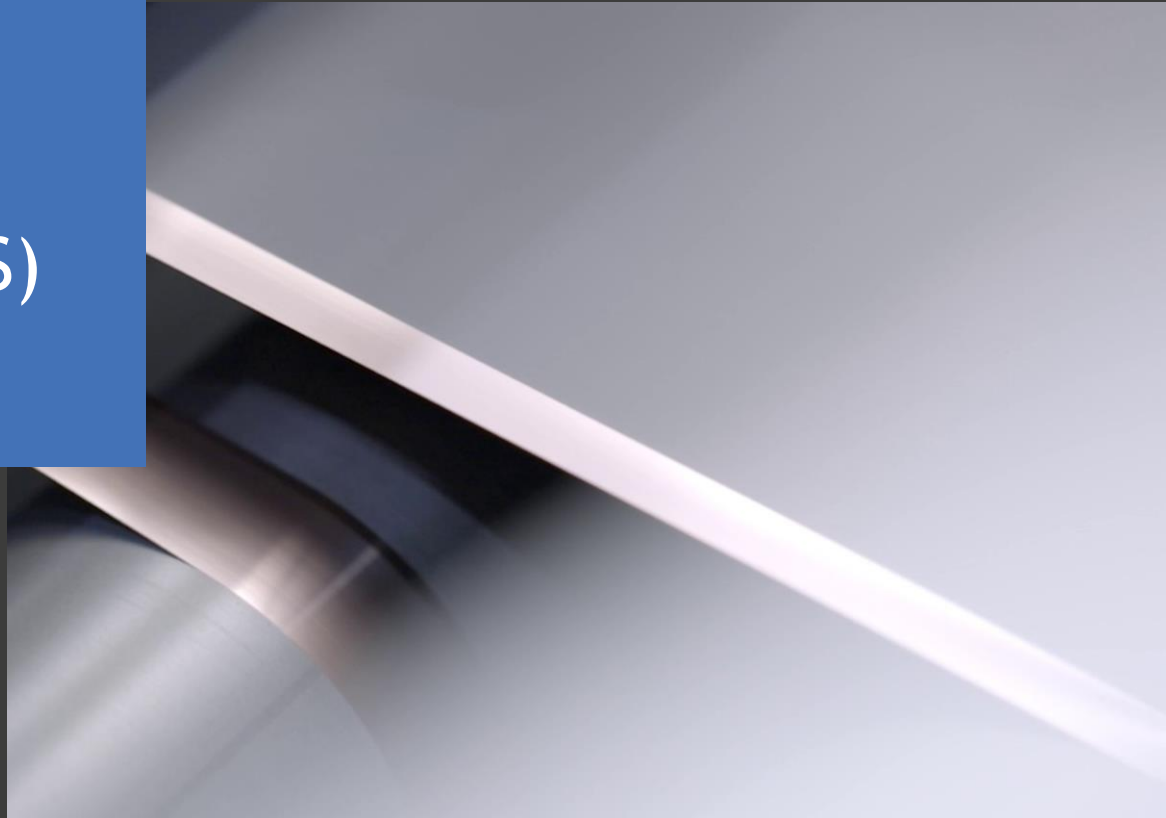
As an employer, we attach great importance to treating our employees responsibly and respectfully. We create attractive conditions to promote personal and professional development.



### *Responsible corporate governance*

In line with our value system, we act on the basis of irreproachable conduct from an ethical and legal perspective.

02  
Jagenberg  
Converting  
Solutions (JCS)







## Integrate.Converting.Competences.

Your turnkey solution for the production of innovative foils for Surface and Energy applications.



# The company at a glance

JCS integrates competences and technologies into a single solution for applications in the Energy and Surfaces industries. We thereby extend our own products with state-of-the-art components and services from other members of Jagenberg Group.

## Purpose

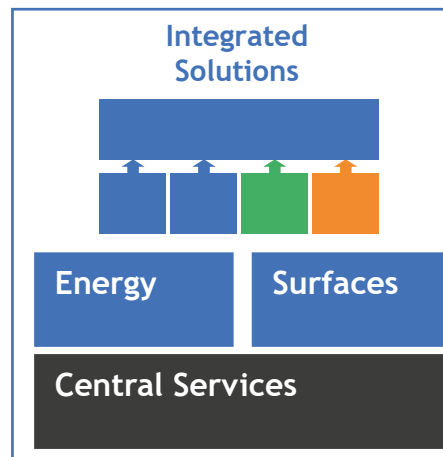
Bocholt  
Krefeld  
Hamburg  
Erlangen  
Ostwestfalen-Lippe

## Locations

**>80 employees**  
and **>500**

located within other  
Group companies

## Employees



## Management Team

Thomas Lebbing (Managing Director)  
Guido Lebbing (Managing Director)  
Steffen Heckmann (Managing Director)

# Where we are active

## Energy

Battery

Fuel Cell



Serial production equipment

*Turnkey*

Components

Process know how

## Surfaces

Décor  
printing

Coating



Décor printing  
product lines

Coating  
modular kit

*Turnkey*

Components

Process know how

# Where we are located

## Energy

Hamburg & Erlangen



Battery

Fuel Cell

## Surfaces

Schloß Holte-Stukenbrock & Enger



Décor printing

Coating

## Central Services

Krefeld & Bocholt



Finance &  
Controlling

Marketing

Human  
Resources

Sustainability

IT

M&A / PMI

# Where you can find us

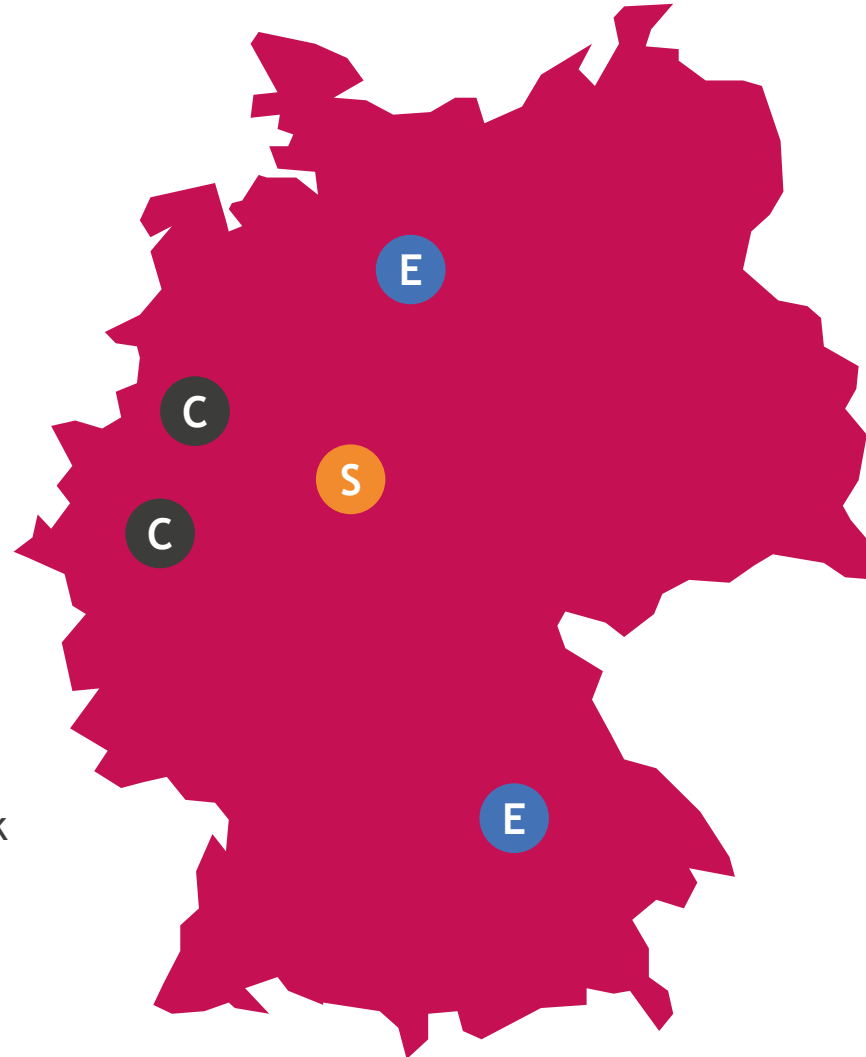
## Energy **E**

Friesenweg 32a  
22763 Hamburg  
+49 40 2285 107-0

Am Weichselgarten 34  
91058 Erlangen  
+49 9131 932 86 80

## Surfaces **S**

Hellweg 130  
33758 Schloß Holte-Stukenbrock  
+49 5207 986 76 02



## Central Services **C**

Kleinewefersstr. 1  
47803 Krefeld  
+49 2151 93 40 99-0

Konrad-Zuse-Straße 16  
46397 Bocholt  
+49 2871 2412-500

03  
JCS Surfaces



# State of the art equipment for printing applications



Production  
turnkey  
equipment

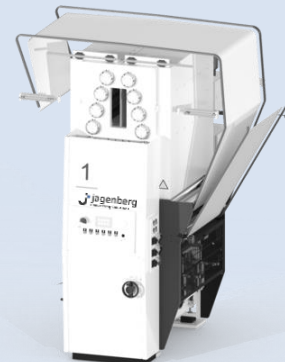


Components for  
your individual  
application

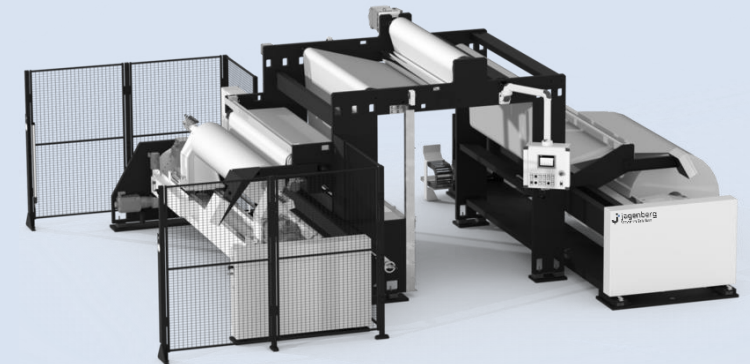
Winder



Printing, Lacquering &  
Coating unit



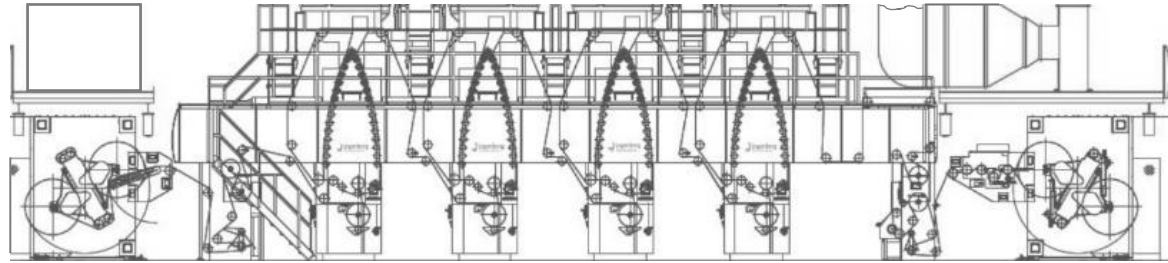
Re-winder



# Product lines for printing applications

## Jupiter

Performance Paper



### Main characteristics

- Higher speed
- Increased efficiency
- Many options
- New technologies

## Saturn

Performance Film



### Main characteristics

- Optimized for film (PVC)
- Advanced drying technology

## Neptune

Economy Film & Paper



### Main characteristics

- Moderate speed
- Highly standardized components
- Designed in Germany, built in India



# Our turnkey solutions

Project Mgmt.

Turnkey

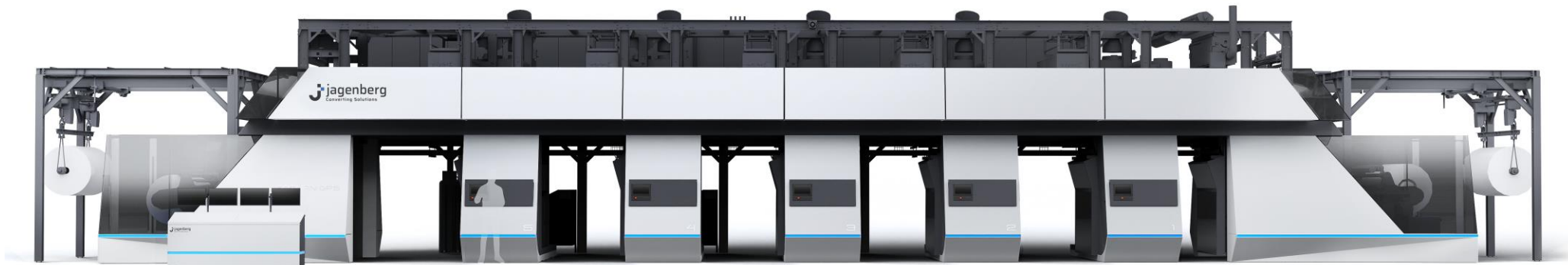


Integrate.Converting.Competences.

Lead  
engineering

Technology

**Your general contractor.**  
Integrates all competences in state-of-the-art  
surface production lines



Converting.Processing.Unlimited.

Unwinder

Rewinder

Coating units



Unique.Surface.Ideas.

Web handling

Printing units

Lacquering units



Textile.Converting.Excellence.

“Neptune”

Standardized  
Components



Automation.Drives.Future.

Automation

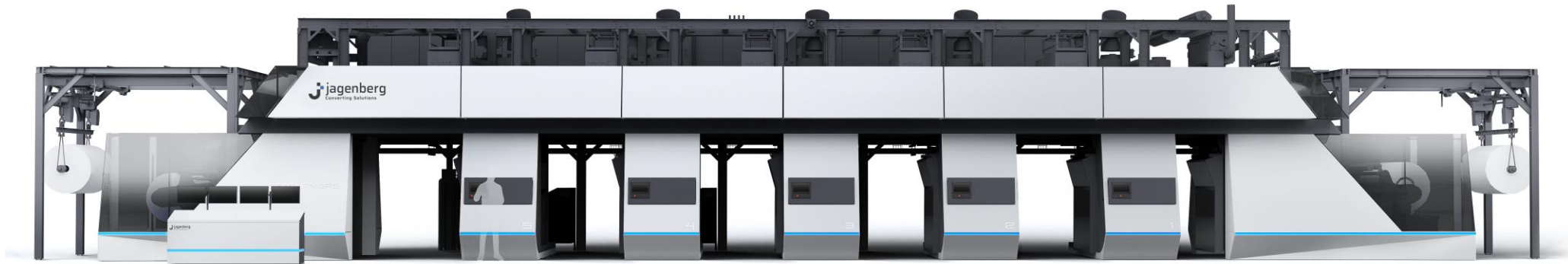
Safety



Connect.Develop.Advance.

Digitization

# Our offering



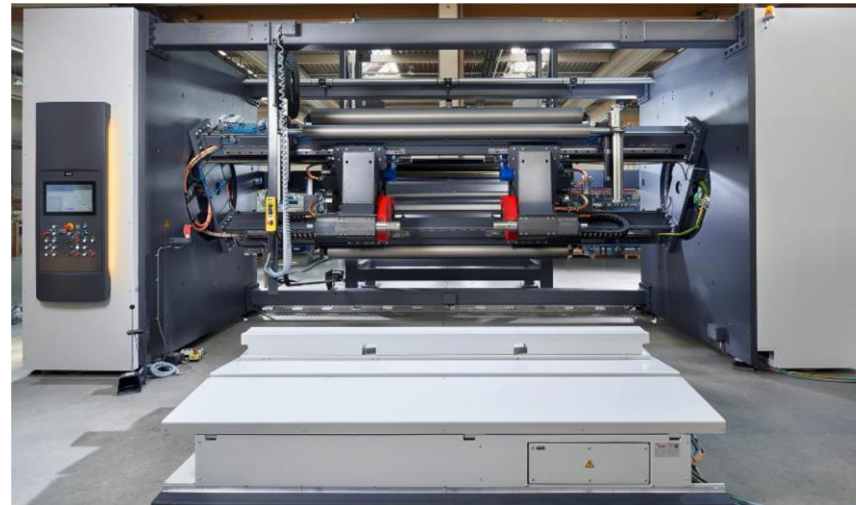
Converting.Processing.Unlimited.

Special machine engineering company which develop special solutions for processing and finishing of web-shaped materials

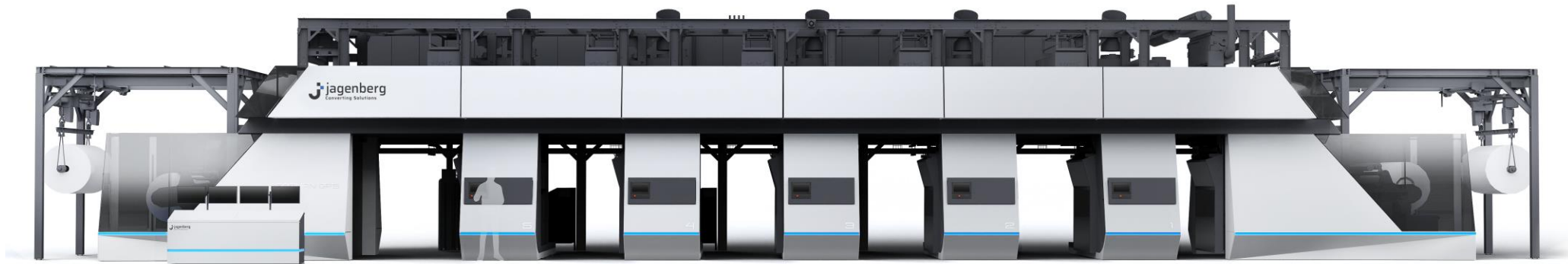
Turret unwinder with auto-splice

Turret rewinder

Coating units



# Our offering

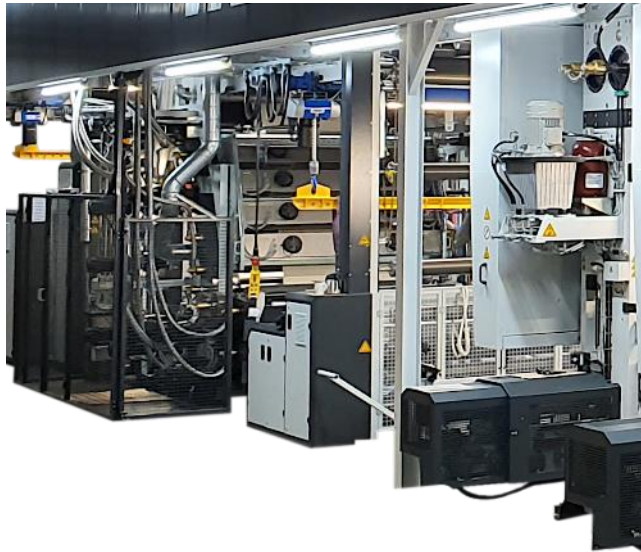


Jagenberg Group

Unique.Surface.Ideas.

Special machine engineering company which develops special solutions for decor applications

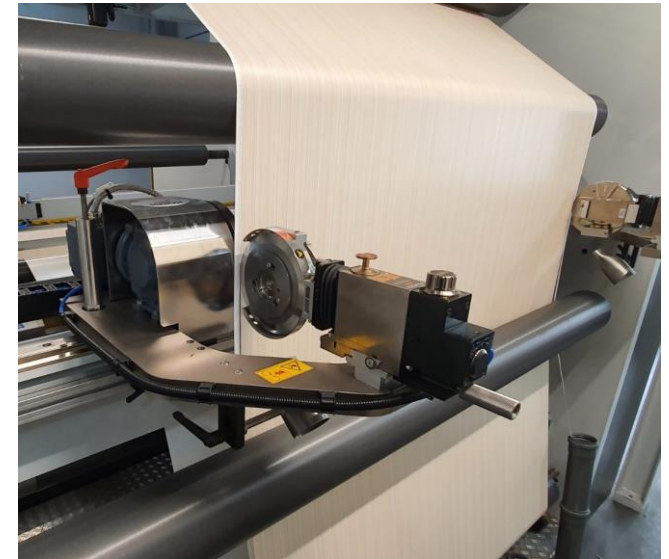
## Printing units



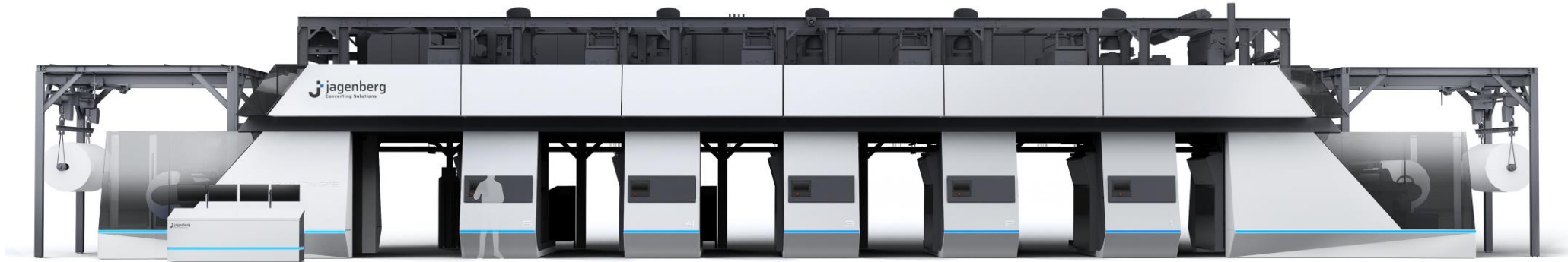
## Lacquering units



## Web handling



# Our offering



Automation.Drives.Future.

Partner for all questions concerning drive and automation technology. Conceptual design, construction and production of electrical and switchgear systems

## Drive technology

**Mechatronic drive concepts.**  
From operating units to cabinet rows or complex switchgear containers for large systems.

## Control technology

**PLC & HMI operating and monitoring systems.**  
Pioneering technologies for operation and monitoring and for process visualization.

## Data systems

**Software development/ visualization systems.**  
Development of comprehensive visualizations with maximum transparency across all layers.

## Panel shop

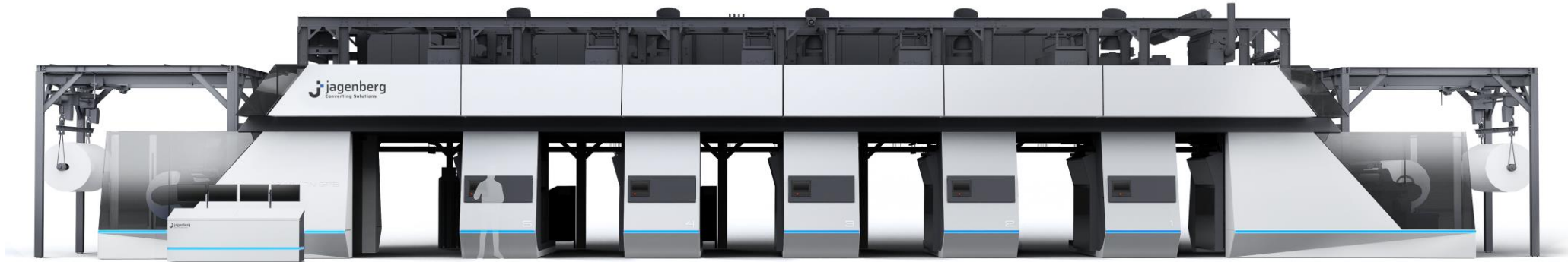
**CE and UL certified panel shop.**  
With our own panel shop, we provide highest reliability for your delivery schedule.

## Start up

**Electrical installation / commissioning.**  
Team of globally experienced professional technicians and engineers for the installation and commissioning of systems “on-site”.



# Our offering



Automation.Drives.Future.

Lauer CE-Safety

For more than 25 years an expert in all issues relating to CE marking, risk assessment, functional safety, assembly instruction and machine safety

## CE Marking & Risk assessment

### CE compliance.

From precise risk analysis and risk evaluation following the applicable directives to comprehensive research and analysis of standards (i.e. DIN EN ISO 12100) as well as safety-related review of machinery under construction.

## User manuals & assembly instructions

### Operating instructions and technical documentation.

We provide full service in creating complete preparation of operating and assembling instructions or alternatively evaluates pre-prepared technical documentation and supports the creating process at the customers site by training.

## Functional Safety Engineering (FSE)

### EN ISO 13849 application.

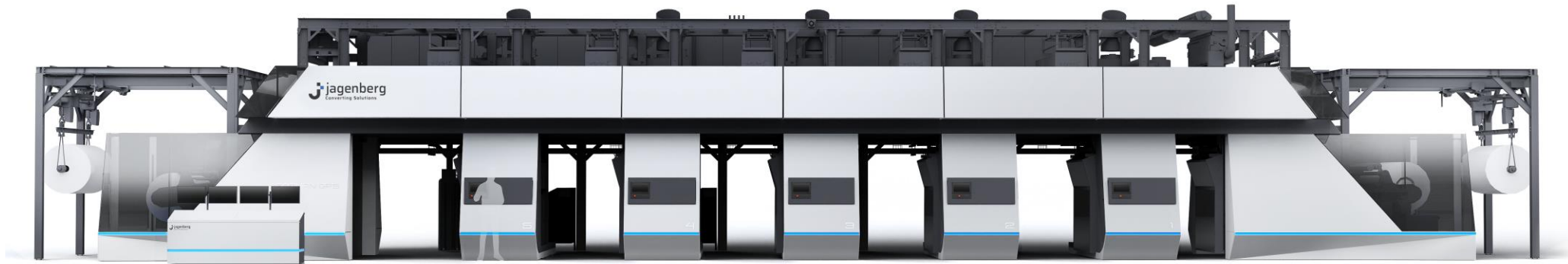
Our specially trained control engineers support machinery constructors by designing, verifying and validating safety functions.

## Professional CE-software

### Directives, risks and draw up manuals.

With the right software, these tasks can be completed faster and more efficiently. We offer proven CE-software products that are continuously updated.

# Our offering



Connect.Develop.Advance.

We focus on improving processes in production and thus optimizing the efficiency of companies across the entire value chain

## IIoT platform



**IIoT for your equipment.**  
The platform offers digital intelligence for manufacturing. It connects machines, production and companies. It monitors production and bundles all relevant information for high production quality, resource conservation and low downtimes

## Data management



**Digitized manufacturing.**  
Manufacturing is brought to a new level. Our solutions enable direct interfaces to ERP-Systems, communication to MES-Systems as well as support traceability through roll protocols

## Smart sensors



**Smart data harvester.**  
There are many different factors that can influence maintenance cycles and product quality. the@dge unit is simply installed and connected via LAN cable (PoE) and communicates with our IIoT platform.

# How to reach us

**Guido Lebbing**  
Managing Director Surfaces



[guido.lebbing@jagenberg-converting.com](mailto:guido.lebbing@jagenberg-converting.com)

**Jagenberg Converting Solutions GmbH**

Konrad-Zuse-Str. 16  
46397 Bocholt

[info@jagenberg-converting.com](mailto:info@jagenberg-converting.com)